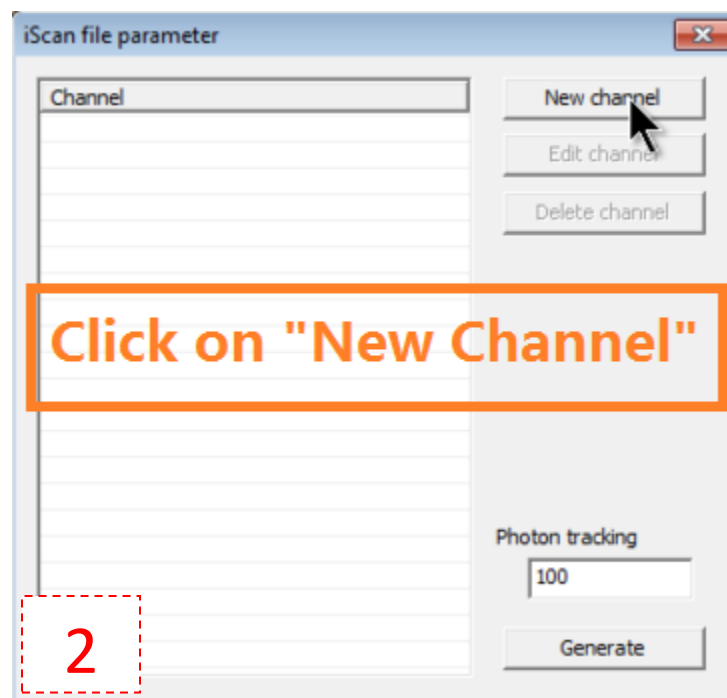
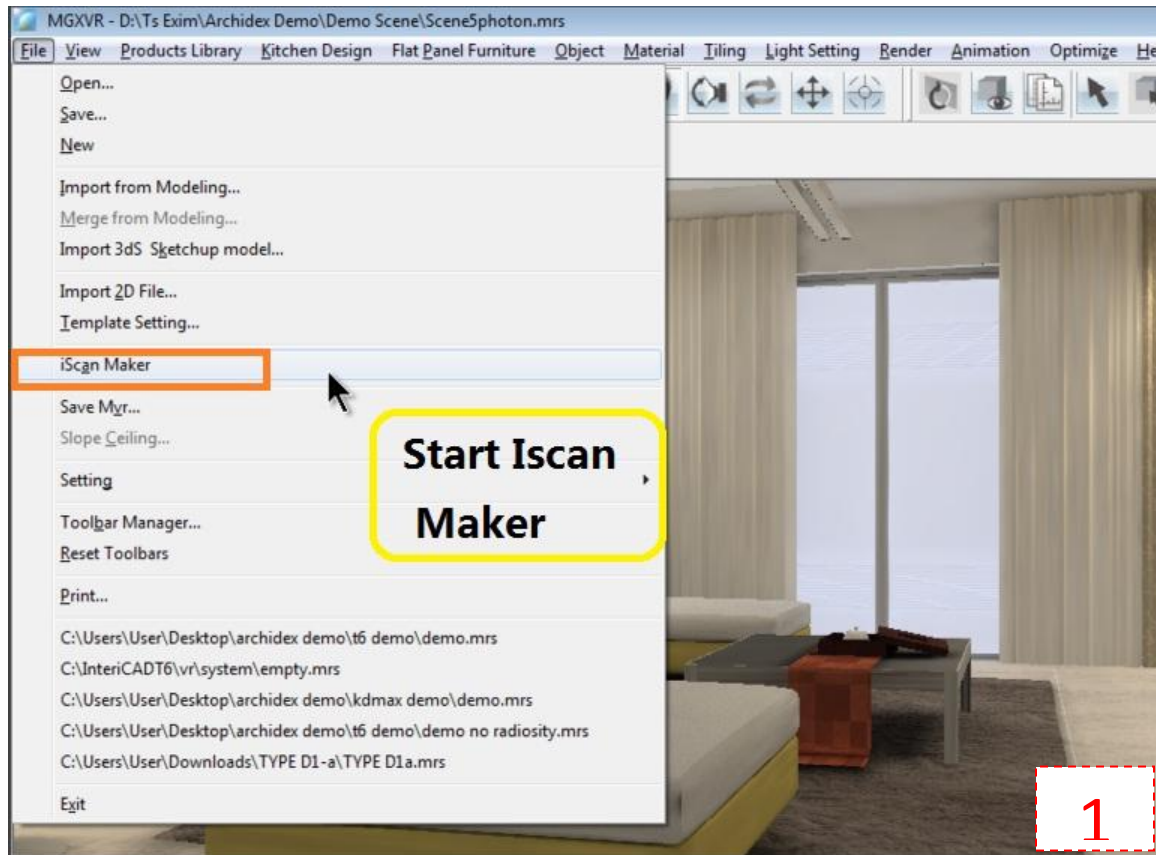
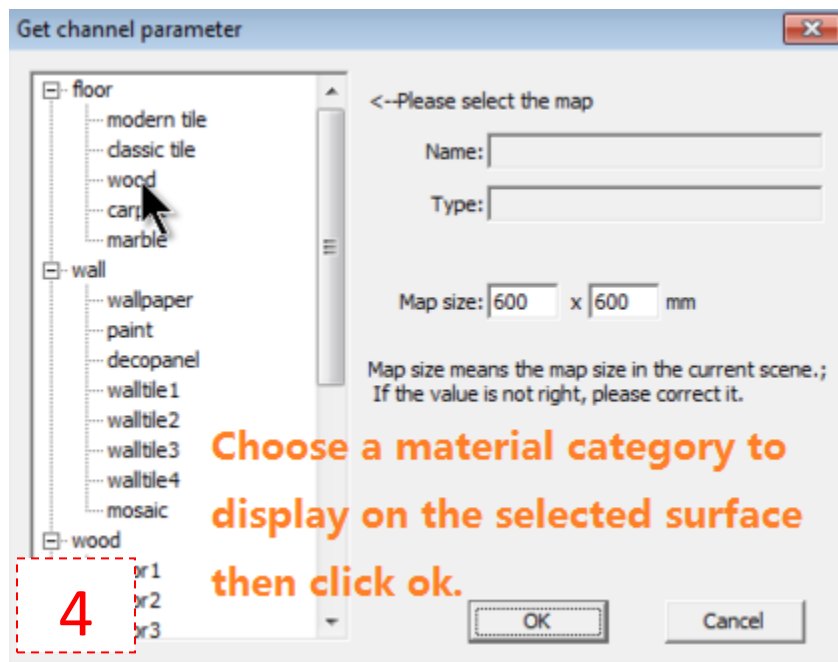


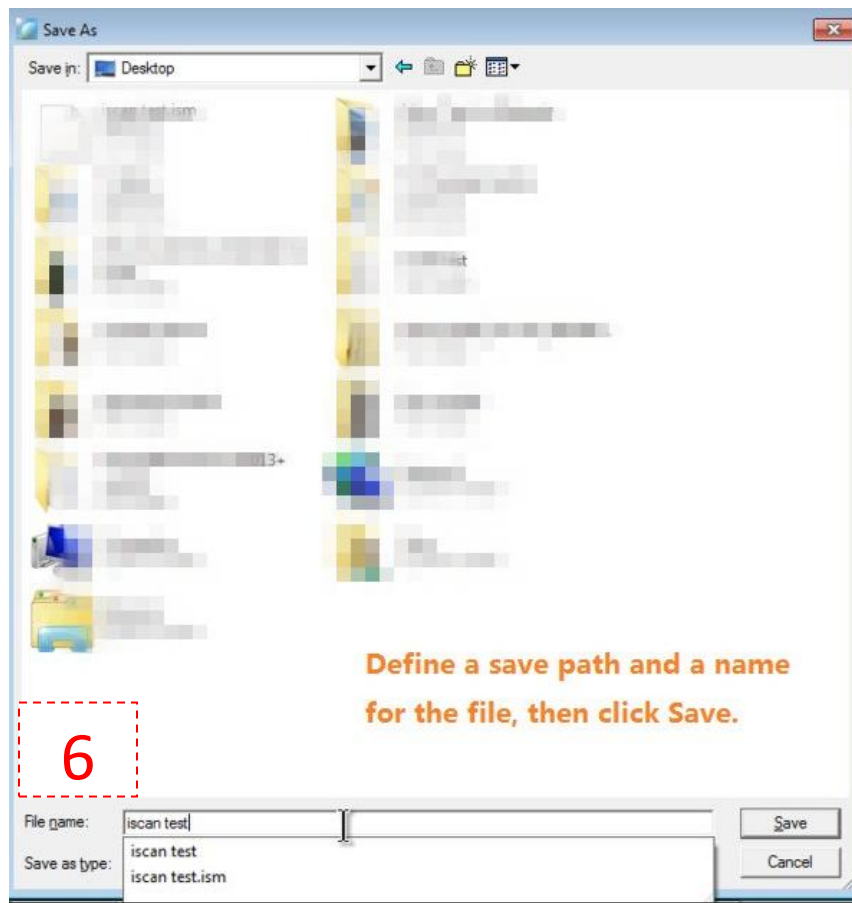
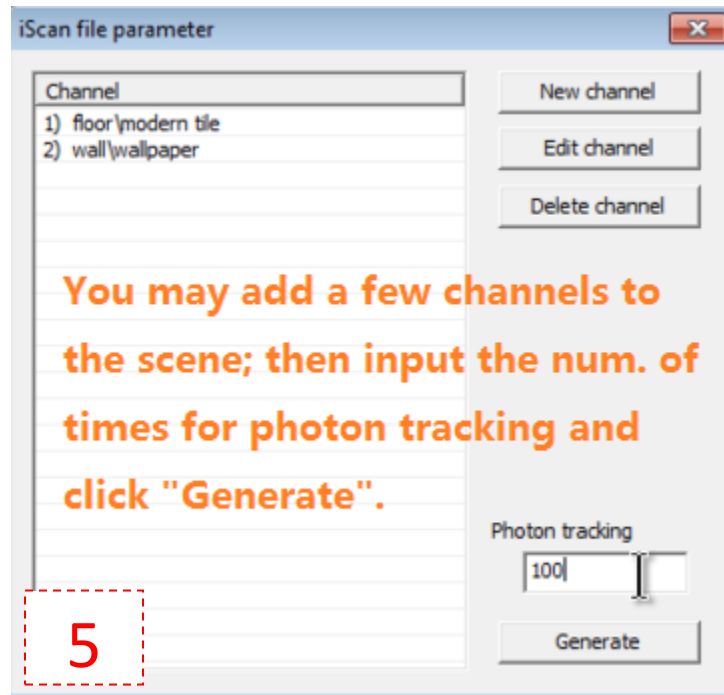
How to create Iscan scenes using Intericad T6



How to create Iscan scenes using InterCAD T6



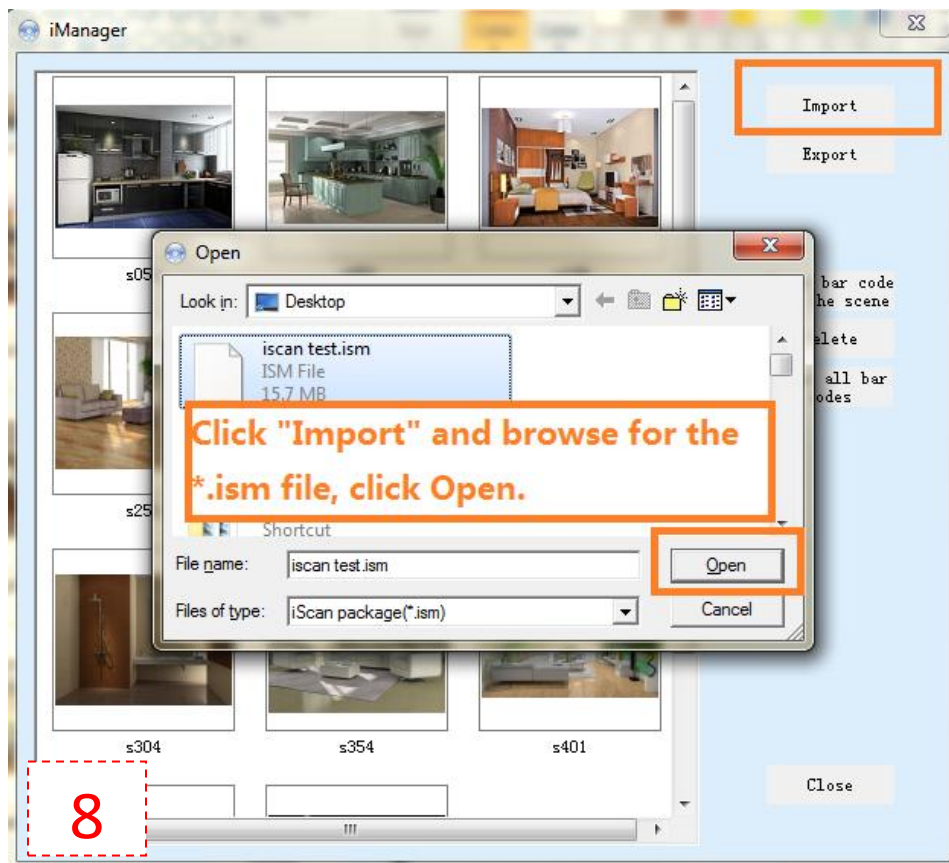
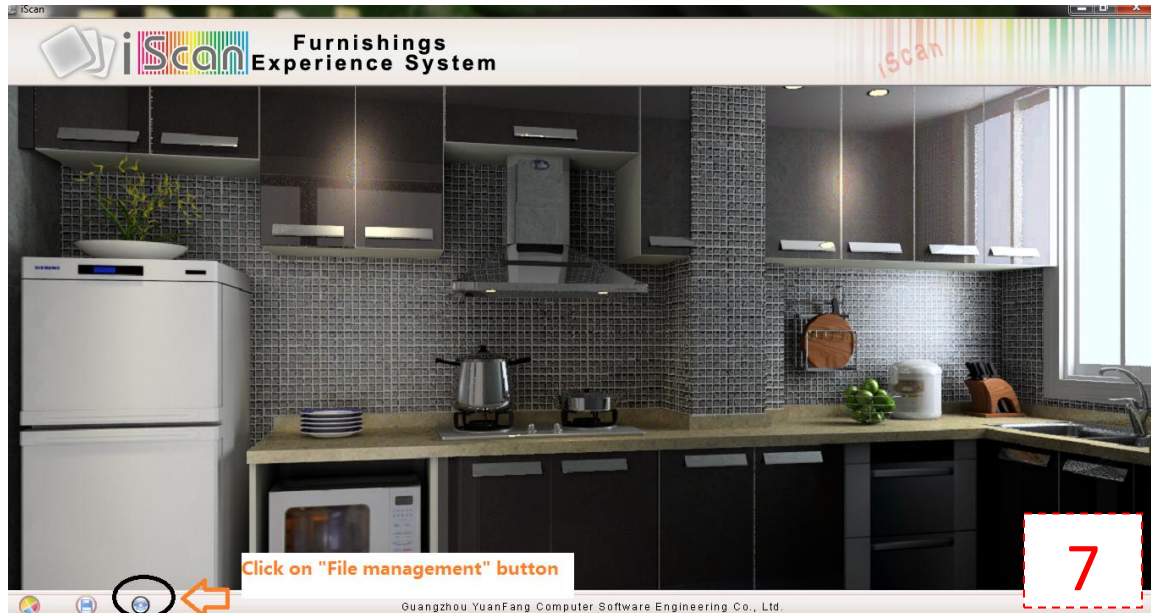
How to create Iscan scenes using Intericad T6



The system will start to render the file. You will get the iscan file with *.ism format.

How to create Iscan scenes using Intericad T6

Next, start Iscan program.



How to create Iscan scenes using Intericad T6

